

مجموعة الرقابة الفلسطينية



PALESTINIAN MONITORING GROUP

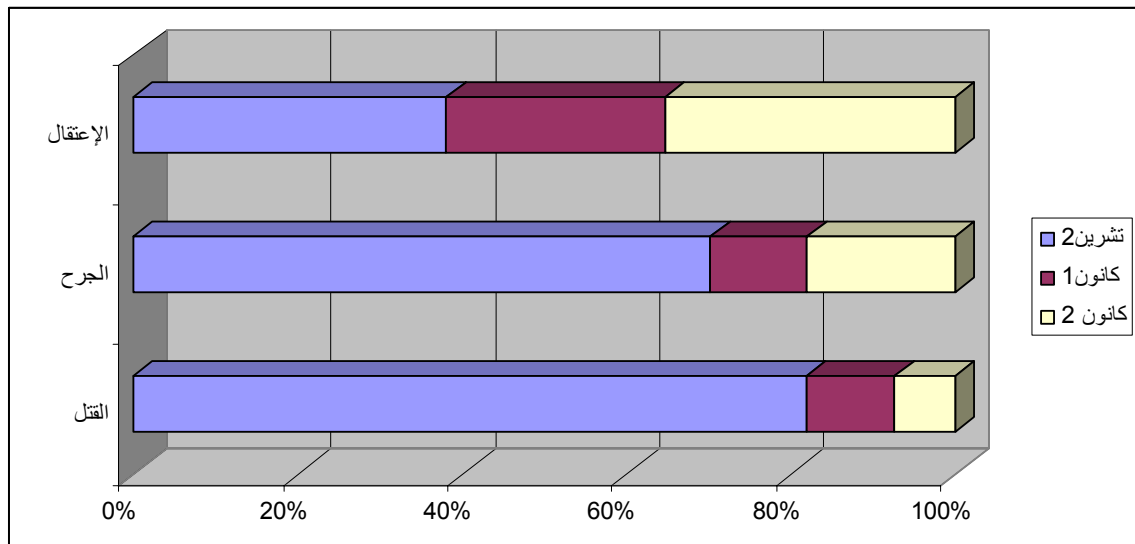
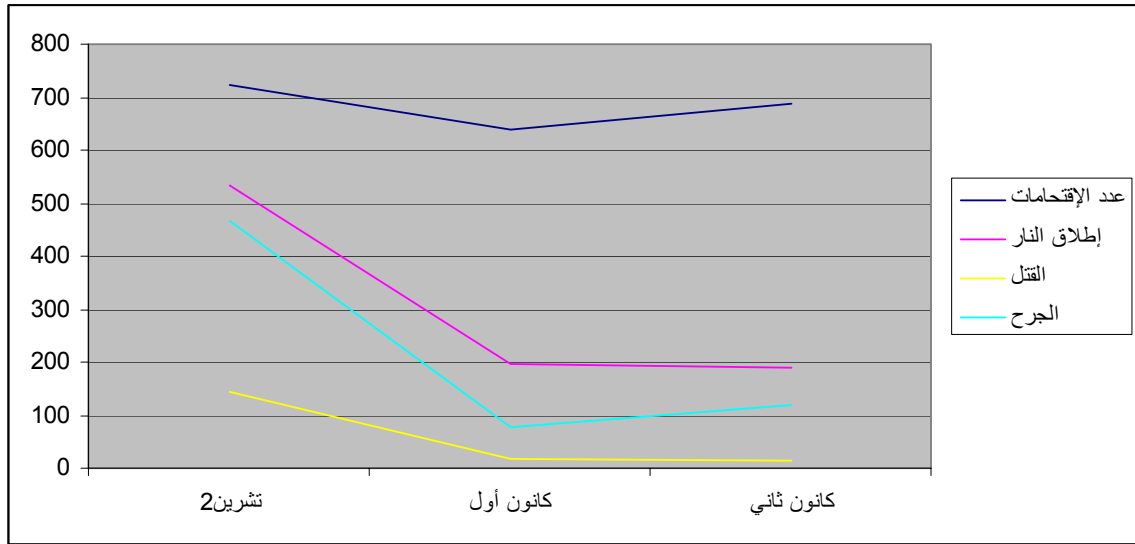
2007 ()

.2007 ()

					01 .04 •
		5	23	4	
	17		-		01 .11 •
			()		01 .16 •
				10	01 .18 •
				3	07 .01 .16 •
					01 .18 •
3		135			01 .24 •
			2		
		8			01 .24 •
2					01 .25 •
5					01 .30 •
				3	

				2 (12)	1 (12)	2 (11)	
" "				0	1	0	
) 2	%31.6	() 1	13	18	145	
.2 25	3 2		%91	(
%74.4	1		%53.8	120	78	468	
	.2	96	32 30				
34	2	%7.6	%32.3	557	421	603	
	.2	36	45				
366	340	2002		686	640	722	
			2 365				
60	2005						
31	26	2	82 55				
			.2 66				
.2	%64.3		%2.1	191	195	535	
28				9	16	19	
	.1	%42.9	%69.2	6	4	13	
"	1	86	63 70	121	124	117	
		3	8 "				
	.2	%7.6	%1	395	391	367	
	.2	%59.5	%325	17	4	42	
	.2	%60	%31.8	58	44	145	
	.2	%80.7	%36.8	12	19	62	
				3	8	8	
				2	5	9	
				1	0	6	
				6	9	5	
.2	%48	%31.6		13	19	25	
2	%10.7			2210	1996	3291	
2	%32.9						

الإجراءات المتخذة				ك2	ك1	ت2
3 3 :	3 4 2 :	1 2 3 :	/	8	11	8



(4 9) 13
4 . 145 18
2 :

78 (17 103) 120
30 : 468
5

421 (15 542) 557
79 107 603
2 34 : .49 53 58 76
3 3
. 28 13 2 20

06 .04 .17

" "

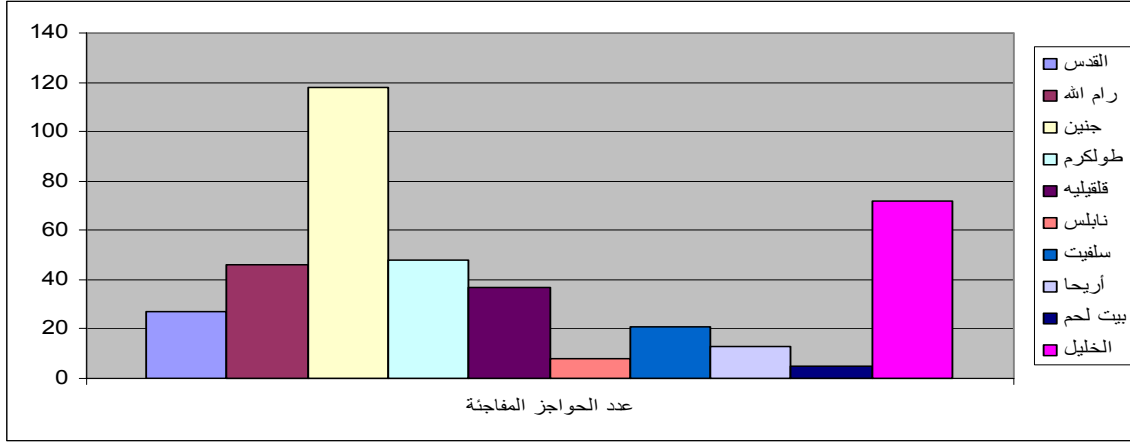
.()

" "

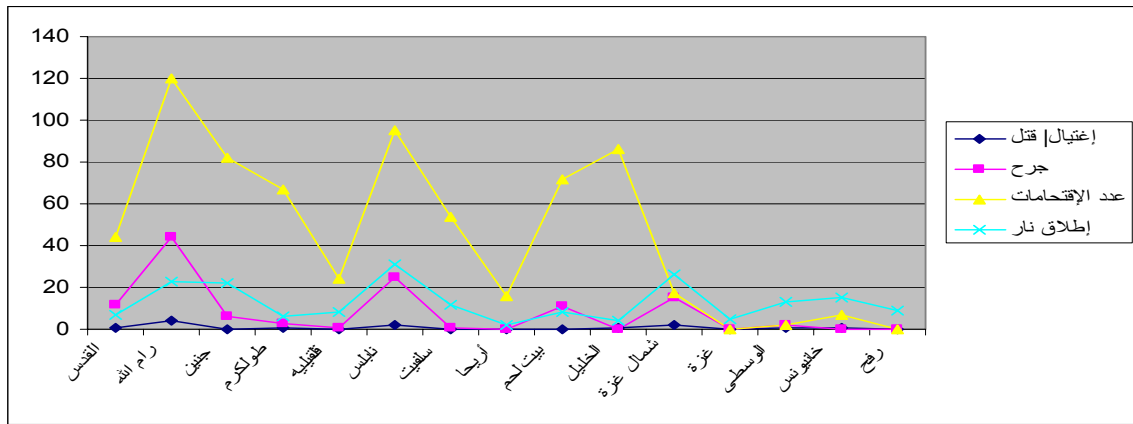
.(367 391 395)

.13

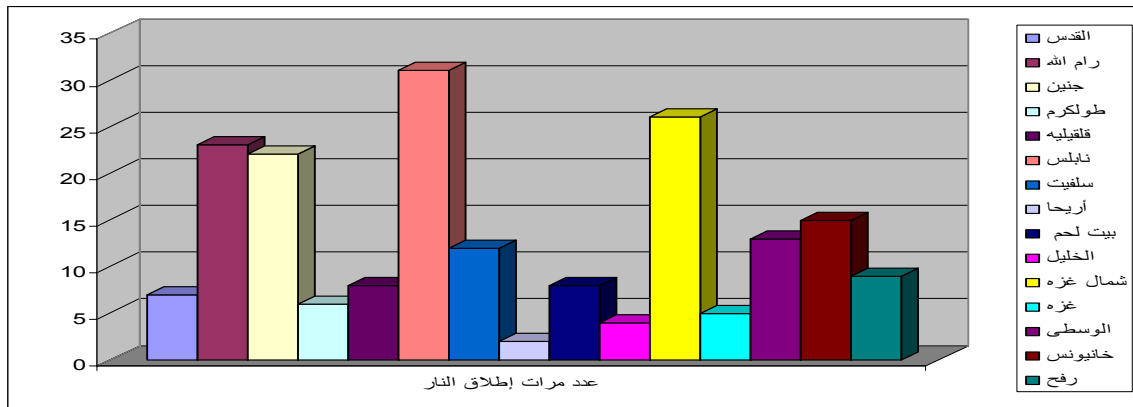
5



1. : 686 (640 722 72 82 86 95)
 : 120 . 67 79 11.5%
 13 4 (4) 6
 12
 10
 2. 26
 .06 .11 .26 06:00
 3. (A) 340
 4. 05 .03 .16
 05 .03 .21
 2005 .02 .08
 3 8
 05 .07 .13
 7 2 31
 5 - 1 - 1 - 6 -) 18
 .(3 5 -



195 (68 123) 191
 34 79 : 535
 2 2 12 62
 68 06.11.26 06:00
 33 (13) 84



: (2 7) 9

	2	-	2	
	2	2	-	
	4	-	4	/
3	1	-	1	
	9	2	7	

:

11

17

4

5

8

.5

5

58 ()

.(3 55)

:

4

3 :

3

200 (\$240) 1000

5

9

6

4

:

8 : 25 .(19 7) 13

" "

: . 9 5

8 3
:

2 6 0

117 124 121

-) 67

10

- 11

V.I.P

(27

-

3 19

3 8

23 " ") 54

" 31"

: (3 5) 8

()