

مجموعة الرقابة الفلسطينية



PALESTINIAN MONITORING GROUP

2007 ( )

.2007 ( )

-

.

.

.

-

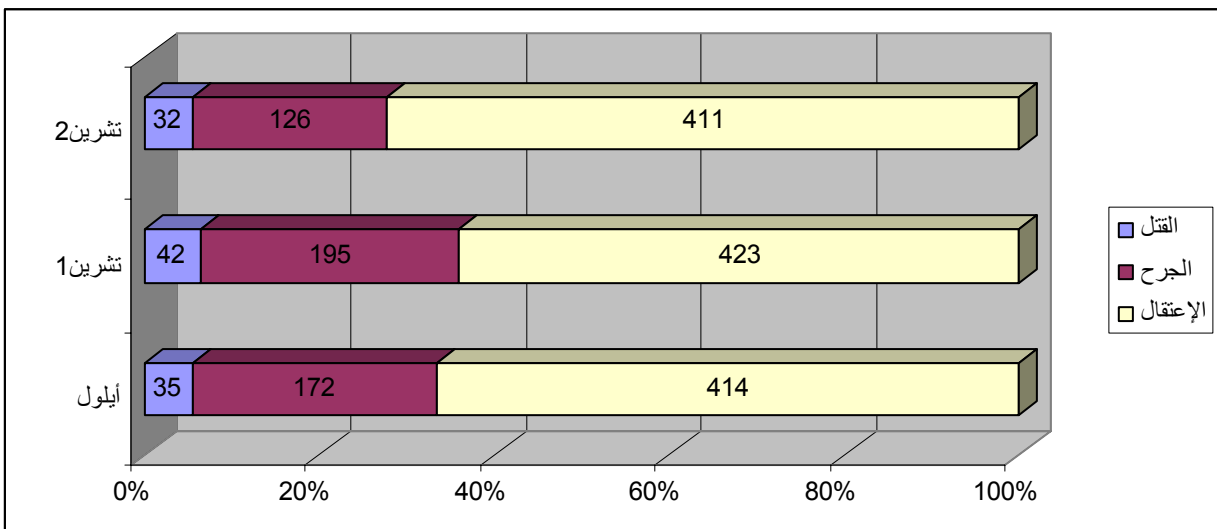
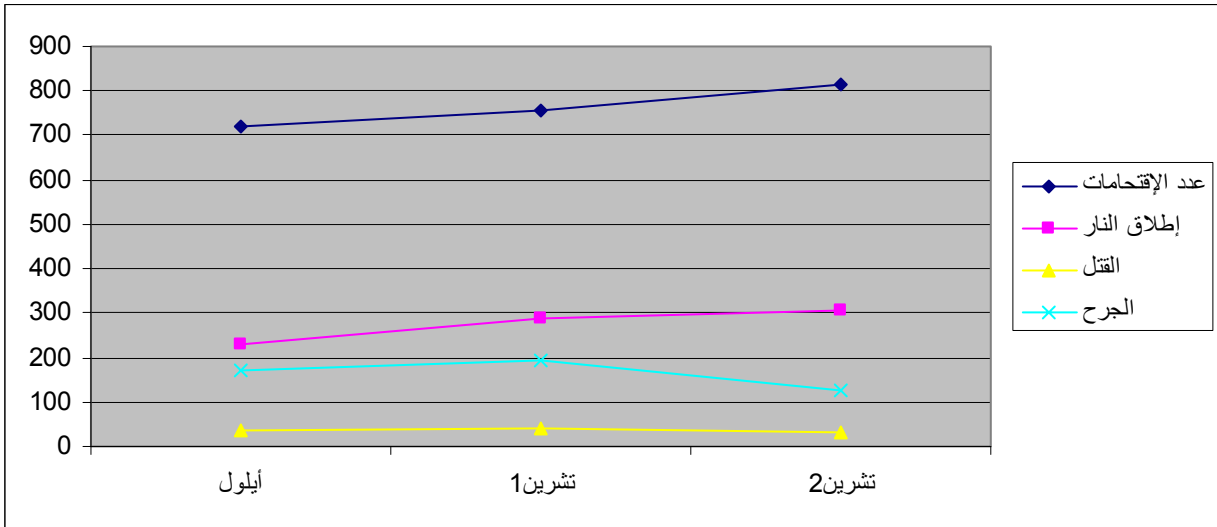
.	2	3	11 .04	•
.	.	" "	15 -	11 .05 •
.		17 16		11 .10 •
.				11 .12 •
.				11 .16 •
.	.(	) 2	9	
.	4	5		11 .20 •
.	(	)		11 .25 •
.	2	3		11 .27 •
.				11 .28 •
.				11 .29 •
.			2	
.				11 .30 •

.( )	1	0	1	
20 :	31	30	1	
3 5 6 20 : 2 19	126	59	67	
: 11 2 70 35 16 9 83 58 33 14 20 43 17 3 5 27 : 22 4	411	13	398	
: 3 6 9 12 99*134 60*9 65 71 77 41 103 91 36	816	30	786	
: 63 45 15 42 15 44 21 10 67 38 69	429	0	429	
10 62 69 130 22 5 6	304	135	169	
.1 1 1 6 9 :	18	0	18	
.1 1 5 16 1 1 1 1 :	27	0	27	
/	94	28	66	
.6 6 4 14 2 3 :	35	12	23	
.3 1 2 :	7	4	3	
) 60 54 .(	114	114	0	
/	3	0	3	
3	6	0	6	
.	3	0	3	
1 1 3 1 :	6	0	6	
.5 1 4 1 12 1 1 :	25	0	25	
	2456	425	2031	

	محافظات الضفة
6 3 1 1 1 1 :	7

				2 (11)	1 (10)	(9)	
				1	2	0	
		8.6%	21.4%	31	40	35	
			5	1	2		
20		26.7%	35.4%	126	195	172	
			32		39		
27		0.7%	2.8%	411	423	414	
			36		22		
389	463	463	2002	816	757	720	
12			30				
		32.8%	4.8%	304	290	229	
			22	18	6	10	
		350%	92.9%	27	14	6	
	96	73	54	114	135	156	
			)				
			.(				
		3.6%	1.6%	429	436	445	
		12.5%	250%	7	2	8	
		34.7%	3.3%	94	91	144	
		10.3%	25%	35	28	39	
		200%	25%	3	4	1	
			50%	3	2	2	
		33.3	25%	6	8	9	
		100%	25%	6	8	3	
		10.7%	30.6%	25	36	28	
	0.9%			2456	2477	2421	
		1.5%					

الإجراءات المتخذة		أيلول	ت1	ت2
1 :	2 7 6 :	4	7	7



)

(

30 1) 31

20 : .2 8 4 1 15 1

( 59 67) 126

20 : .10 11 17 21 26

5 6

19 2

( 13 398) 411

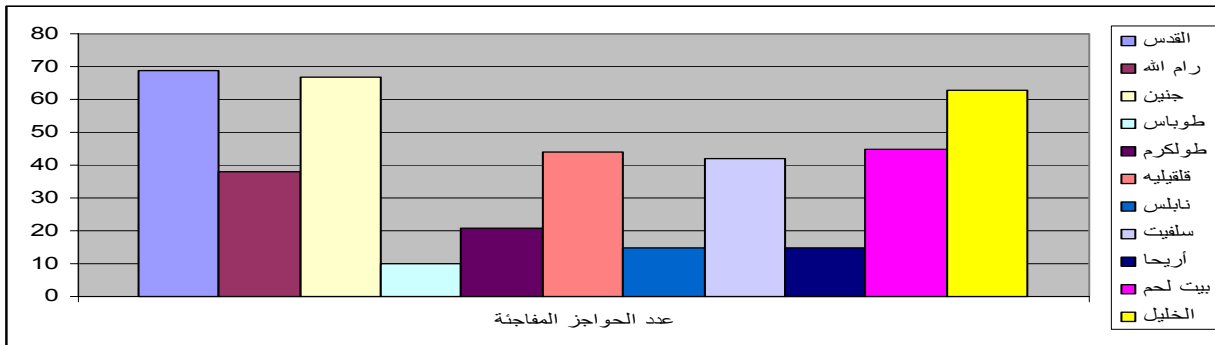
33 35 43 58 70 83 :

3 27 : .20

22 4

06 .04 .17

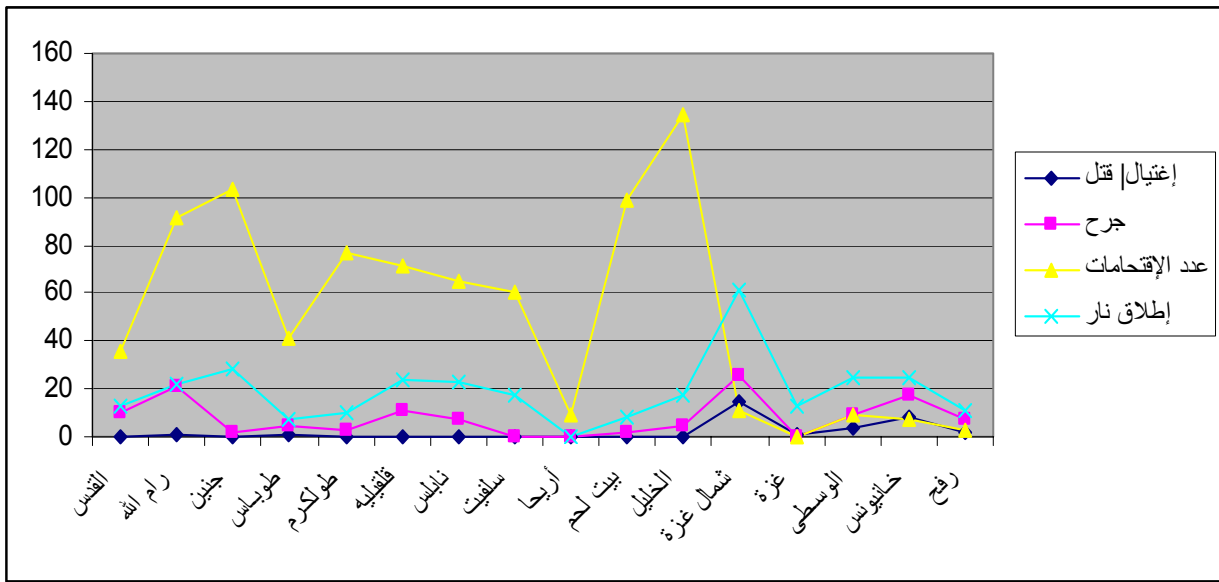
( 445 436 429 )



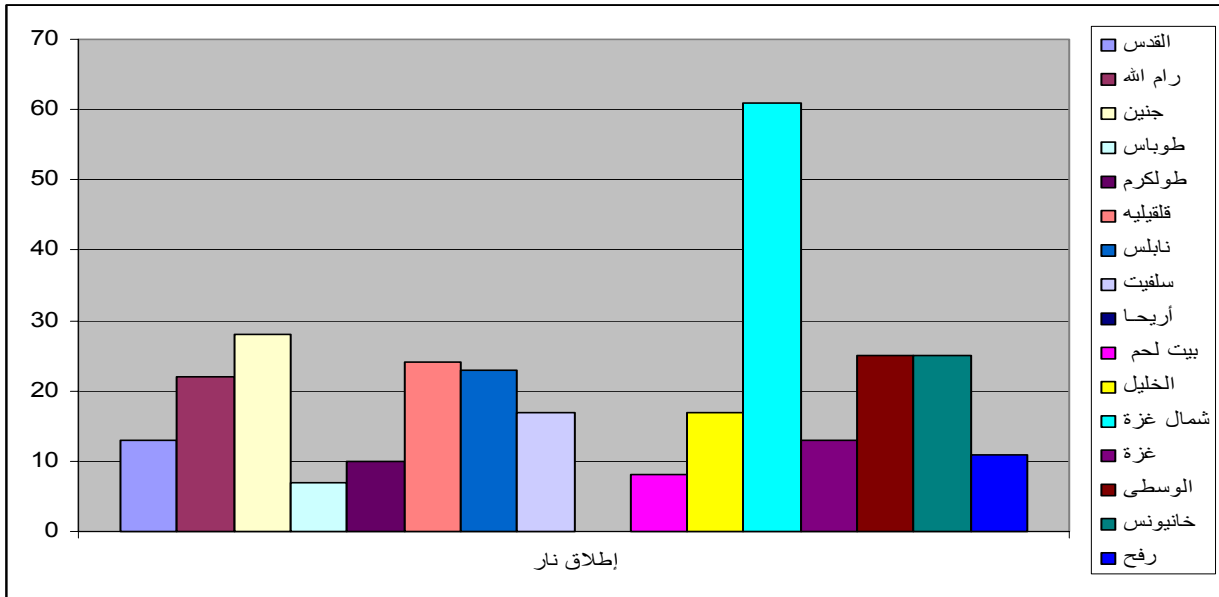
1. : 816 ( 786 ) 30 ( 61 71 77 91 99 103 134 : .60

130 %16 ( 19 ) 27  
6 14 ( ) 35

2002 "A" .2  
%66.3 541



304 ( 135 ) 169 : 386  
6 10 62 69 130 : 22 5 135  
22 3 10



.(

22

)

18

	1	
	2	/
3	5	
	4	
	6	/

.(

4

3)

7

3

.( 28 66) 94 ( )  
/ :

- 6

3

		/		
1			177.9	
3	( )	" "	*	
1	3	" "	*	
6	3	6		
1				
6	3	2	1	



: 25  
 5  
 6  
 3 - -  
 .  
 : 6  
 .  
 : 3  
 .  
 : 3  
 .  
 . 114  
 - : - ) 54 :  
 - 12 18  
 . 26 4 - 28  
 .( " " ) 60 :  
 6 : 7  
 .