

مجموعة الرقابة الفلسطينية



PALESTINIAN MONITORING GROUP

2008 ()

.2008 ()

.()

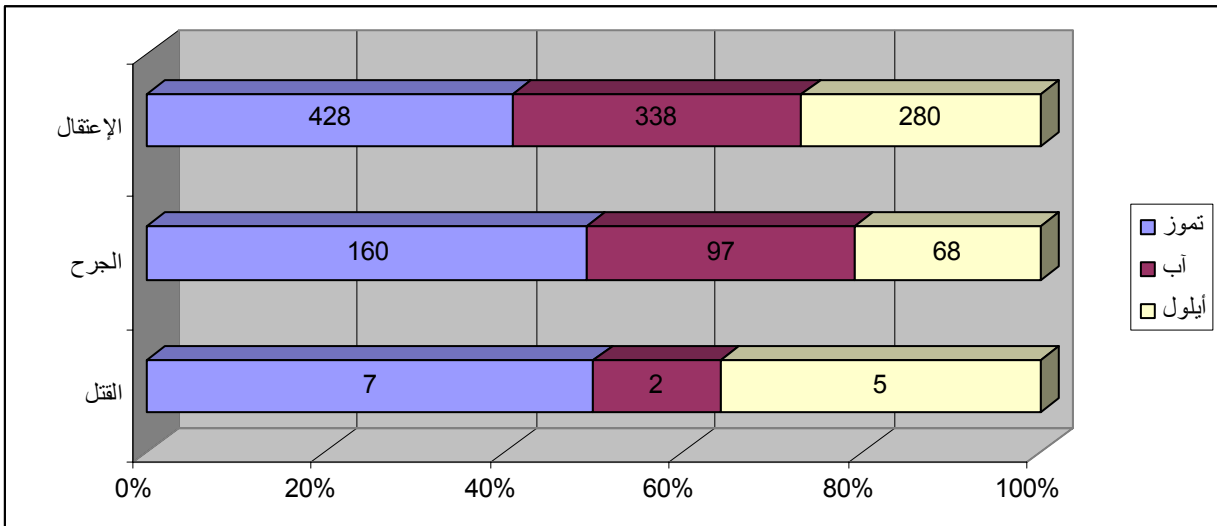
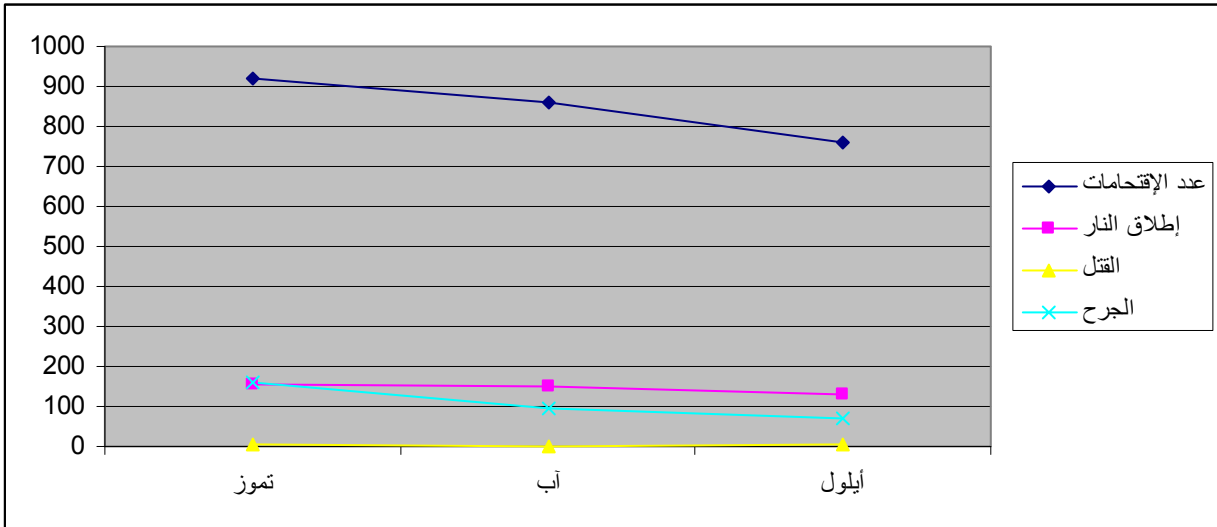
2				09 .01 •
				09 .10 •
	2	2		09 .13 •
		5 -		09 .13 •
				09 .19 •
			6	
		14 -	" "	09 .20 •
				09 .20 •
			12 -	09 .21 •
	2	-		09 .21 •
				09 .22 •
				09 .23 •
)			(

										5	0	5					
				4						68	6	62					
			5														
	14	20	2	15	32	15				280	6	274					
	.2	4	55	35	25	5	56										
		8	3		9	2	32:										
	:	1	135	100	11	51	78	53	78	41	103	90	19	760	1	759	
		:		78	37	4	38	18	22	18	7	29	27	59	337	0	337
	2		7		69						41			131	10	121	
					4					8							
	2		3		8				:					13	0	13	
		. 57	:		47	:								104	104	0	
		.1	5	4	2	1	:							13	0	13	
										/				67	5	62	
					.4	1	3	:						8	0	8	
														3	0	3	
					3									6	0	6	
														2	0	2	
					(U.N.R.W.A)												
														5	0	5	
														34	0	34	
										/							
														1836	132	1704	

ملاحظات		محافظات
		الضفه
		2

				(09)	(08)	(07)	
.	" "			0	0	1	
.	%16.7	%150		5	2	6	
	%57.5	%29.9		68	97	160	
		20	26 7				
32	%34.6	%17.2		280	338	428	
		30	25				
	%17.4	%11.5		760	859	920	
.	521	507	530 2002				
.	%15.5	%12.7		131	150	155	
.	%38.8	%23.9		337	443	551	
.	8			13	21	12	
.	%13.3	%18.2		13	11	15	
.	%46.8	%1.5		67	68	126	
.	%38.5	%33.3		8	12	13	
.				0	3	7	
.	%62.5	%40		3	5	8	
.	%70	%200		6	2	20	
.	%66.7	%33.3		2	3	6	
.	112	55	47 :	104	115	112	
(27)	57 :				
.	%150	%16.7		5	6	2	
.	%26.1	%39.3		34	56	46	
	%16.2			1836	2191	2588	
	%29.1						

الإجراءات المتخذة			أيلول	آب	تموز
.6 7 1 :			2	2	12
.6 3 1 :					



5
" "

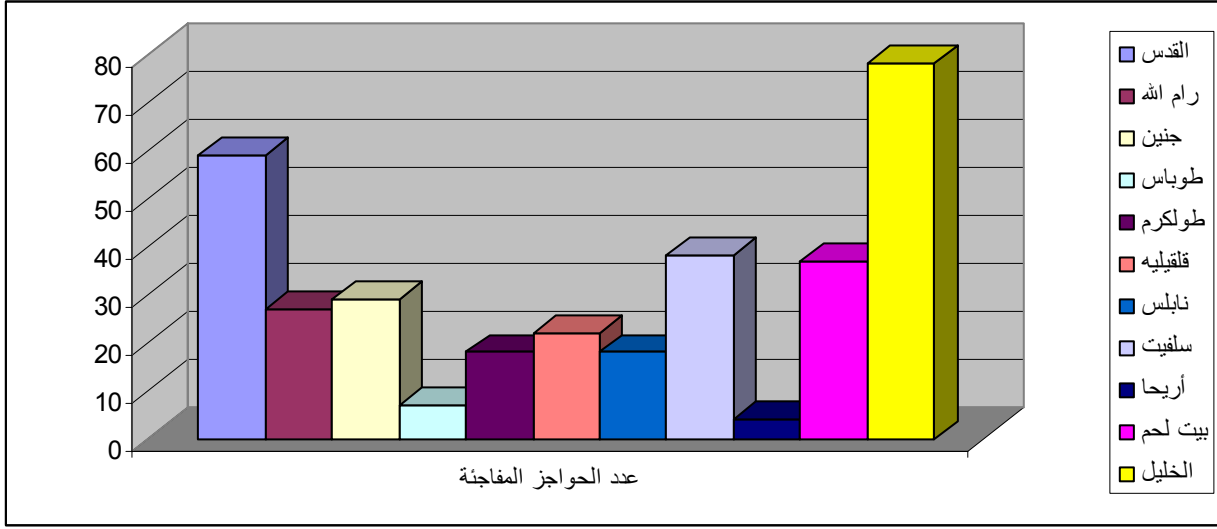
(6 62) 68
4 7 :

5

2 32 : .(6 274) 280
8 3 9

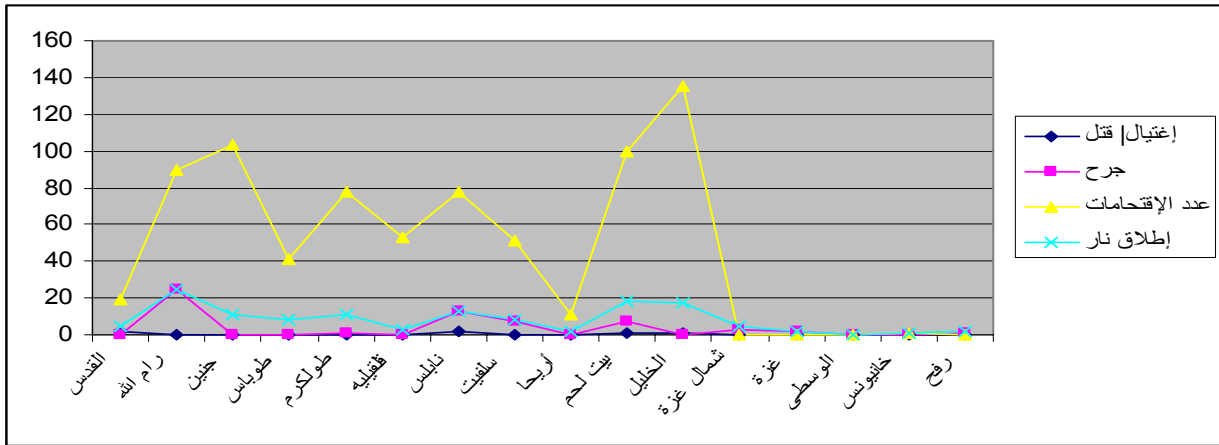
06 .04 .17

.(551 443 337)



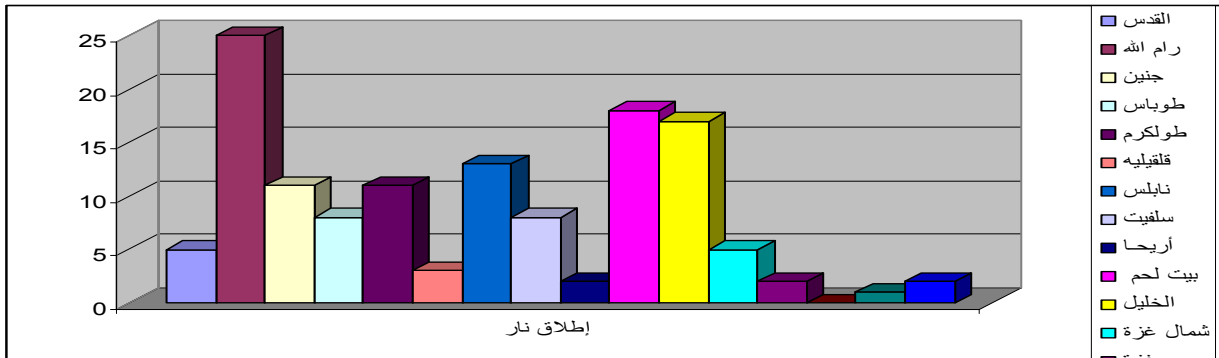
(1 759) 760 : .1
 13 %5.4 41 : .2
 . 8 15 11 (8)
 2002 "A" .3
 %69.7 530 .4
 169
 22 (214 166)
 4) 2 (31 27)
 72) 5 36 (24
 .(116

1			1	12	
1				3	
() 4			2	19	
			5	31	
				3	
1			3	31	
() 7			11	99	
			1	11	
1			2	9	
				9	
			1	1	
			3	6	
				3	
1			7	39	
20	2	1	4	22	
(2 1 1 3)					
3			2	4	
5				4	
				1	
(2 3) 28	2	1	6	31	



131 (10) 41 : 8
 2 7 69 4
 2008 .06 .19

4 (21) 10
 .(18) 3



13 (8)

	3	
	1	
3	6	
	3	/

.(5 62) 67 ()
/ :

7 :

(\$4200) 3000

: 5

1				
1				
1			472.1	
2			21.846	
5	1	1	3	

" " : 34
2

4
() ()
" "

: 3

(UNRWA)

104
- 24 -) 47 :
. 13 - 12 24
3 " ") 57 :
.(

=====