

PALESTINIAN MONITORING GROUP



MONTHLY SUMMARY OF ISRAELI VIOLATIONS

1 June 2010 – 30 June 2010

The following summary tables and overview of events survey hostile Israeli activities during the period 1 June 2010 to 30 June 2010. The report includes a summary table of events, classified by type, throughout the West Bank and Gaza Strip, in addition to a comparative table surveying events over the past three months. The survey is compiled from the Daily Situation Reports of the Palestinian Monitoring Group (PMG) of the Negotiations Affairs Department (NAD) of the Palestine Liberation Organization (PLO). The PMG monitors ground conditions in the West Bank and Gaza Strip, including Israeli and Palestinian violations. The PMG Daily Situation Reports are a survey of daily events collated from information provided by civil ministries and security agencies of the Palestinian National Authority. The information reported through the PMG process represents data available at the time of distribution only.

SAMPLE OF ISRAELI VIOLATIONS DURING THE MONTH OF JUNE 2010

- **01 June:** The Israeli military opened fire on civilian houses East of Rafah, injuring a 65-year-old female civilian.
- **03 June:** An Israeli military jeep ran over a civilian South of Hebron. The civilian died of injuries sustained.
- **03 June:** An Israeli settler opened fire on and injured a civilian near Al 'Eizariya in the Jerusalem District.
- **03 June:** An Israeli settler opened fire on and wounded two children along the main road near Al 'Arrub refugee camp in the Hebron District. One of the injured children is in critical condition.
- **07 June:** The Israeli military opened fire on Beit Hanun (Erez) Crossing in the Northern Gaza district, injuring a civilian.
- **10 June:** A political prisoner from the Jerusalem District died at the Ar Ramlah Prison Hospital, after his health condition had deteriorated in prison.
- **11 June:** Two mass demonstrations, including international peace activists, took place in Ni'lin town and Bil'in village in the Ramallah District in protest against Wall construction. Confrontations took place between the Israeli military and protestors, during which the Israeli military injured a journalist and a civilian. The Israeli military also detained four journalists, including a foreign correspondent.
- **12 June:** The Israeli military opened fire on civilians northwest of Beit Lahiya in the Northern Gaza District, injuring two civilians.
- **14 June:** An Israeli settler vehicle ran over a 10-year-old Palestinian near Kiryat Arba' settlement in Hebron City, leaving him with serious injuries.
- **27 June:** Israeli settlers attempted to seize control of a house and assaulted civilians in Silwan neighbourhood in Jerusalem. The Israeli military also fired rubber-coated steel bullets, tear gas and sound grenades, injuring three civilians. In addition, Israeli troops severely beat other civilians, leaving them with contusions.

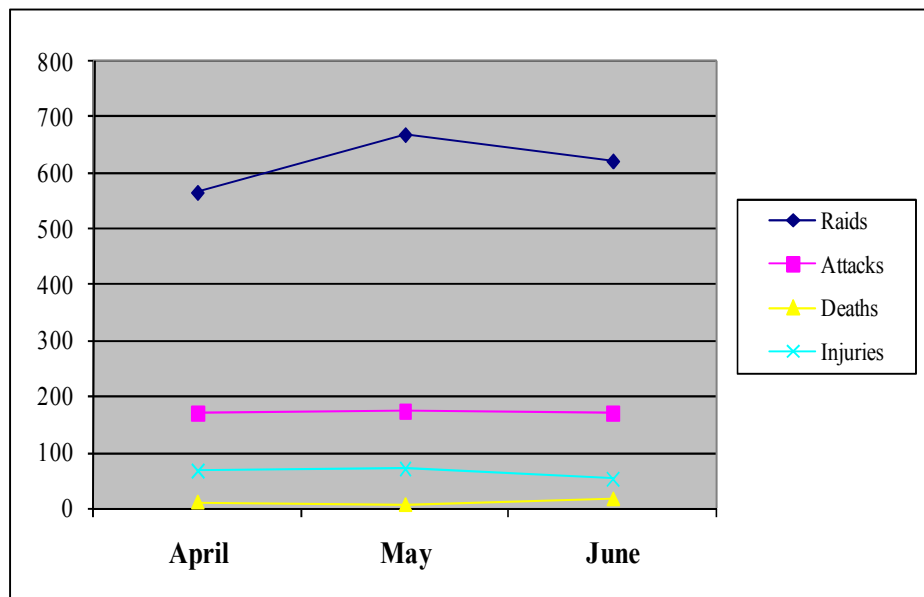
SUMMARY TABLE OF EVENTS IN THE OCCUPIED PALESTINIAN TERRITORY – JUNE 2010

EVENT	WEST BANK	GAZA STRIP	TOTAL	NOTES
Deaths	3	14	17	Includes a political prisoner; a civilian run over by an Israeli military jeep; and 12 armed Palestinian individuals.
Injuries	34	18	52	Includes 10 children; an elderly female civilian; a journalist; an international peace activist; and six armed Palestinian individuals.
Attacks	82	87	169	The Israeli army carried out 45 attacks during raids on Palestinian residential compounds; 64 attacks during confrontations with Palestinians; and 38 attacks from Israeli army military posts on civilian houses and property. Israeli navy boats opened fire on 13 occasions. Israeli combat aircraft carried out six aerial attacks on Palestinian territory and Israeli settlers opened fire on civilians and property on three occasions.
Raids	591	31	622	33 in Jerusalem; 56 in Ramallah; 53 in Jenin; 18 in Tubas; 52 in Tulkarem; 46 in Qalqiliya; 65 in Nablus; 44 in Salfit; 13 in Jericho; 38 in Bethlehem; 173 in Hebron; six in Northern Gaza; two in Gaza; three in Central Gaza; 12 in Khan Yunis; and eight in Rafah.
Arrests	253	2	255	Includes 27 children; three female civilians; five students; a journalist; a medic; an injured civilian; a member of the Palestinian Legislative Council (PLC); and 10 Palestinian security officers.
Home Demolitions	1	1	2	The Israeli military demolished two Palestinian homes in the Bethlehem and Khan Yunis districts. The Israeli military also distributed notices for the demolition of 67 homes in the districts of Jerusalem (26), Ramallah (14), Qalqiliya (3), Nablus (8), Salfit (8), Bethlehem (4), and Hebron (4).
Attacks on Public & Private Property	66	11	77	Destruction of Property: Israeli troops and settlers destroyed house furniture; civilian vehicles; a fishing boat; olive trees; crops; an irrigation network; barracks; and sheep pens. Confiscation of Property: Israeli troops confiscated civilians' ID cards; computers; a wireless telecommunications device; a septic truck; car spare parts; a rifle; and ammunition.
Home Occupations	12	—	12	The Israeli military occupied and converted into military posts civilian homes in the districts of Nablus (1); Salfit (1); & Hebron (10).
Closure of Crossing Points	—	124	124	The Israeli military closed international crossing points on 30 occasions (Rafah Crossing to Egypt and continuing closure of Yasser Arafat International Airport) and crossing points to territory under Israeli administration on 94 occasions.
Flying Checkpoints	557	—	557	The Israeli army set up flying checkpoints and searched civilians and vehicles in and around Palestinian residential locales in the districts of Jerusalem (77); Ramallah (25); Jenin (17); Tubas (19); Tulkarem (2); Qalqiliya (150); Nablus (48); Salfit (25); Jericho (37); Bethlehem (26); and Hebron (131).
Medical Obstruction	1	—	1	Israeli troops severely beat five medics in Ni'lin in the Ramallah district.
Attacks on Religious Sites	2	—	2	Israeli troops raided and took photographs of a mosque as well as surrounded another mosque in Hebron.
School Disruption	4	—	4	The Israeli military raided Al Quds University and searched laboratories in the Jerusalem District. Israeli troops also raided two schools in the Bethlehem District. In the Hebron District, Israeli troops took position near a school while students were sitting for a high school examination and impeded access to students to take a high school examinations at another school.
Provocation of Palestinian Forces	36	—	36	The Israeli military provoked or harassed Palestinian National Security forces on 15 occasions; Police on 12 occasions; Preventive Security on three occasions; General Intelligence on one occasion; Presidential Guard on one occasion; Civil Defence on three occasions; and Customs Police on one occasion.
Settlement Activity	7	—	7	In addition to land confiscation, the Israeli military levelled land in an area between two settlements East of Jerusalem for construction of settlement housing units. The Israeli military levelled land in the Bethlehem District; installed a wire fence around Kedumim settlement; and excavated land for installation of electricity posts in the Qalqiliya District.
Settler Violence	52	—	52	Israeli settlers opened fire, killing a civilian and injuring another. Israeli settler vehicles ran over a child and civilian. Israeli settlers beat a child, two female civilians, and several other civilians; opened fire on civilians; set fire to olive trees, a civilian vehicle, and wheat crops; threw stones at civilian houses and vehicles; and raided a Palestinian town and other residential locales.
TOTAL	1701	288	1989	

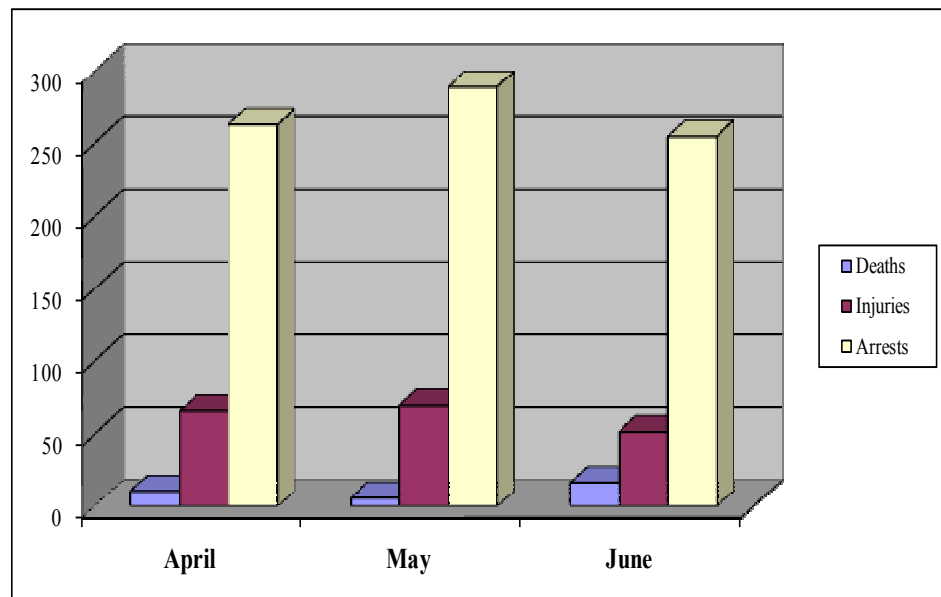
COMPARATIVE TABLE OF EVENTS OVER THE PAST THREE MONTHS

EVENT	APR. 2010	MAY 2010	JUNE 2010	COMMENTS
Deaths	11	6	17	Death toll sharply rose by 183.3% compared to May and by 54.6% compared to April.
Injuries	66	70	52	Drop of 25.7% compared to May and of 21.2% compared to April. 10 children were injured in June as in May, but compared to 13 children wounded in April.
Attacks	170	173	169	Decrease in the number of attacks by 2.3% compared to April and of 0.6% compared to April.
Raids	566	669	622	Drop of 7% compared to May, but a rise of 9.9% compared to April.
Arrests	263	289	255	Decrease of 11.8% compared to May and of 3% compared to April. 27 children were arrested in June compared to 35 children arrested in May and 34 in April.
Home Demolitions	4	1	2	Rise of 100% compared to May, but a drop of 50% compared to April.
Attacks on Property	76	67	77	Increase of 14.9% compared to May and of 1.3% compared to April.
Home Occupations	16	9	12	Rise of 33.3% compared to April, but a drop of 25% compared to April.
Curfews	6	4	—	Incidents of curfews were not reported to have been imposed on Palestinian residential compounds this month.
Flying Checkpoints	595	512	557	Rise of 8.8% compared to May, but a drop of 6.4% compared to April.
Complete Closure of Crossing Points	145	147	124	Crossing points to Israeli administered territory were closed on 94 occasions in May, compared to 101 in May and 96 in April. Rafah Crossing and Yasser Arafat International Airport were closed for 30 days. Rafah Crossing was open throughout the month. Yasser Arafat International Airport has remained closed since the outbreak of the second <i>Intifada</i> (Uprising) in 2000.
Medical Obstruction	2	1	1	The same percentage as in May, but a drop of 50% compared to April.
Attacks on Religious Sites	1	3	2	A drop of 33.3% compared to May, but a sharp rise of 100% compared to April.
School Disruption	2	4	4	The same percentage as in May, but a sharp rise of 100% compared to April.
Provocation of Palestinian Forces	12	22	36	Increase of 63.6% compared to May and of 200% compared to April. In addition, the Israeli army arrested 10 Palestinian security officers.
Settlement Activity	4	2	7	Sharp rise of 250% compared to May and of 75% compared to April.
Settler Violence	86	82	52	Drop of 36.6% compared to May and of 39.5% compared to April.
TOTAL	2025	2061	1989	In the month of June, total incidents dropped by 3.5% compared to May due to the decreasing number of injuries, arrests, flying checkpoints, attacks, and incidents of complete closure of crossing points. In comparison to April, total events dropped by 1.8%, reflecting modest decreases in injuries, arrests, flying checkpoints, and incidents of complete closure of crossing points.

COMPARISON OF ISRAELI RAIDS, ATTACKS AND PALESTINIAN HUMAN CASUALTIES OVER THE PAST 3 MONTHS



COMPARISON OF INCIDENTS OF DEATHS, INJURIES, AND ARRESTS OVER THE PAST 3 MONTHS



ANALYSIS OF EVENTS

1. Deaths

In June, the Israeli military killed **17 Palestinians**, including three in the West Bank and 14 in the Gaza Strip. These deaths included a political prisoner and 12 armed Palestinian individuals. An Israeli military jeep also ran over and killed a civilian.

2. Injuries

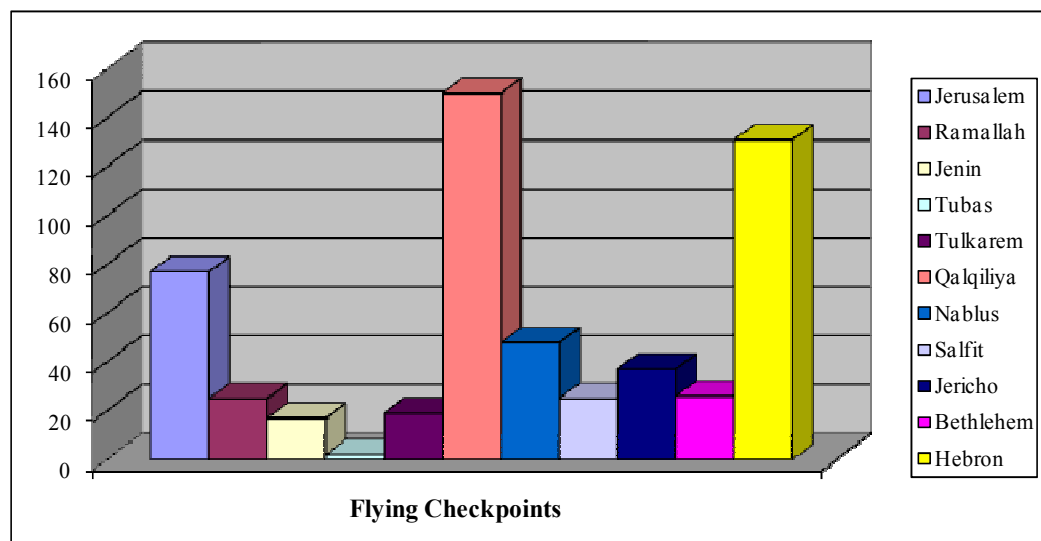
A total of **52 injuries** were reported in June (34 Palestinians in the West Bank and 18 in the Gaza Strip). These reported injuries included 10 children, including three by Israeli settlers; a female civilian; a journalist; six armed Palestinian individuals; and an international peace activist. A civilian was also injured by Israeli settlers.

3. Arrests

The Israeli army arrested **255 Palestinians** in June, including 253 civilians in the West Bank and two in the Gaza Strip. The majority of arrests took place in the districts of Hebron (88), Ramallah (39), Nablus (37), and Jerusalem (32). Among those arrested by the Israeli military were: 27 children; three female civilians; five university students; an injured civilian; a medic; a journalist; a PLC member; and 10 Palestinian security officers.

4. Closure

Especially on Fridays, the Israeli army continues to intensify its restrictions at checkpoints located at the entrances to the Jerusalem city, to close the entrances to the Al Aqsa Mosque compound in Jerusalem's Old City, and to prevent civilians from accessing the Mosque. Considering Israel's administration of it as a "border crossing point", the Israeli military also continues to prevent PNA registered civilian vehicles from crossing *Qalandiya checkpoint* towards Ar Ram and Qalandiya as well as Dahiyat al Bared North of Jerusalem. The checkpoint is overcrowded daily, particularly during rush hours, due to intensified restrictions and search measures applied by Israeli troops. During the month of June, the Israeli military also intensified its restrictions at the *Tayasir checkpoint* and *Al Hamra junction checkpoint* leading to the Jordan Valley area, only allowing access to civilians whose IDs indicate District of Jericho residence or others holding special access permits. In addition, restrictions were intensified and civilian access was obstructed at the *Za'tara junction checkpoint* (separating the northern and central West Bank districts) as well as at the *As Sawahira ash Sharqiya (the 'Container') checkpoint* (separating the central and southern West Bank districts).



Further impeding civilian movement and access, the Israeli military set up **557 flying checkpoints** in and around Palestinian residential locales throughout the West Bank in June, compared to 512 flying checkpoints in May and 595 in April. In general, Israeli troops positioned at these flying checkpoints disrupted civilian access and movement of goods, including agricultural produce.

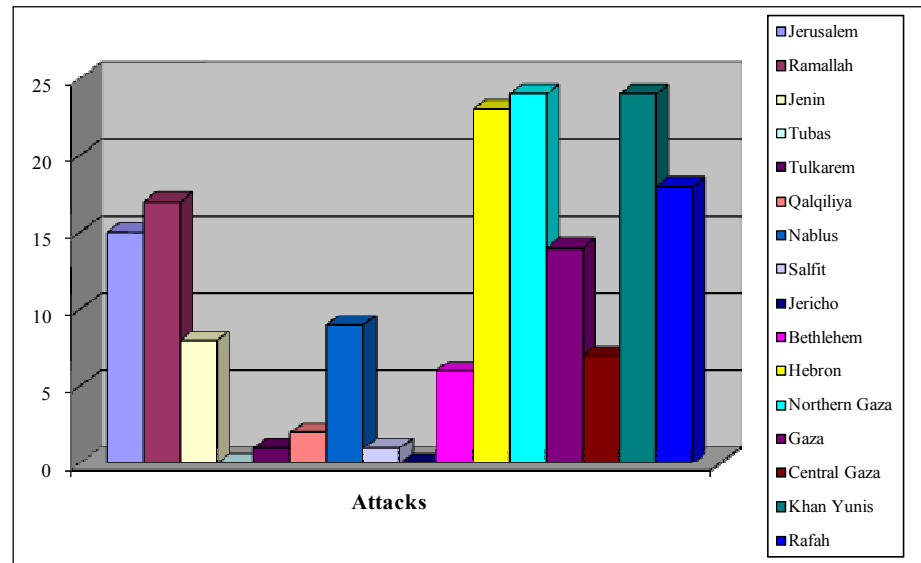
Additionally, the Israeli military continues to impose a sea blockade off the coast of the Gaza Strip and prevents Palestinian fishing boats from operating in the Gaza Strip's waters.

5. Attacks

A total of **169 attacks** were reported to have taken place during the month of June: **82** in the West Bank and **87** in the Gaza Strip.

The Israeli military carried out **45 attacks during raids** into Palestinian residential areas, **64 attacks during confrontations** between the Israeli military and Palestinians, and **38 attacks from Israeli military posts** on civilian homes and property. In addition, Israeli navy boats carried out **13 attacks** on Palestinian fishermen and territory. Israeli combat aircraft carried out **six aerial attacks** on civilians and property and **Israeli settlers** opened fire on civilians and property on three occasions.

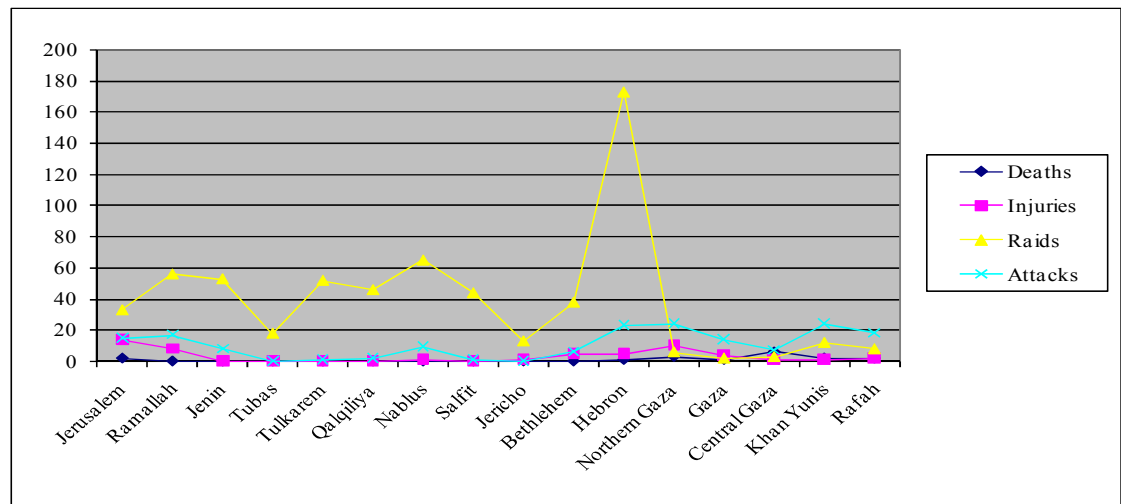
At 02:00 on 18 January 2009, the Israeli military declared a unilateral ceasefire following the large-scale offensive it had launched against the Gaza Strip. However, the Israeli military violated the ceasefire on **87 occasions** during the month of June (compared to 75 violations in May and 87 in April). Also disregarding Israel's unilaterally declared ceasefire, armed Palestinian groups fired **20 mortar rounds** towards the Green Line (compared to 27 mortar rounds fired in May and eight in April). Of those fired, a mortar landed on Palestinian territory. Armed Palestinian individuals also opened fire on Israeli military patrols on seven occasions.



6. Raids

The Israeli military carried out a total of **622 raids** in Palestinian residential locales during the month of June, including **591 in the West Bank** and **31 in the Gaza Strip**. The majority of Israeli military raids took place in the districts of Qalqiliya (150), Hebron (131), Jerusalem (77), Nablus (48), and Jericho (37). The Israeli army **opened fire during 17.5%, or 109 of the 622, raids**. The Israeli military **did not impose curfews over residential compounds** in the West Bank during raids (compared to four times curfews were imposed in May and six in April).

The chart to the right shows the correlation between the number of raids and the resulting human casualties in June.



The table below shows Israeli violations and continued attempts to impede large-scale Palestinian security campaigns carried out in the districts of Jenin, Tubas, and Hebron¹, as well as in the city of Nablus:

Month \ Violations	Raids	Attacks	Deaths	Injuries	Arrests	House Occupations	Provocation of Palestinian Forces ²	Total
June	243	30	1	2 (children)	98 (incl. 9 children, a female civilian, and three Palestinian security officers)	9	11	394
May	240	29	1 (a child)	5 (incl. 3 children)	64 (incl. 15 children)	3	2	344
April	217	30	3 (incl. 2 female children)	14 (incl. 5 children)	73 (incl. 4 children, a female civilian, and a Palestinian security officer)	8	5	350

7. Provocation of Palestinian Security Forces

The Israeli army carried out **36** attacks and provocations of Palestinian security forces and posts during June.³

Types of Israeli Army Provocation against Palestinian Forces in June

Type of Provocation		Notes
Reporting to the Israeli Intelligence agency	7	Requiring that they report to the Israeli Intelligence agency, the Israeli military served summonses on a Palestinian National Security officer in the Jerusalem District; a Civil Defence officer in Qalqiliya District; a Police officer in Salfit District; a General Intelligence officer in Jericho District; a Presidential Guard and Customs Police officers in Bethlehem District; and a National Security officer in Hebron District.
Taking position/setting up checkpoints near Palestinian security posts	21	In addition to taking position near a Palestinian Preventive Security headquarters in Abu Dis in Jerusalem District, the Israeli military took up position in front of and took photographs of a Palestinian Police station in Biddu town. The Israeli military also took up position in front of the Palestinian National Security headquarters in Jenin District; near Palestinian security offices and the Governor's office in Salfit; near security offices in Qalqiliya; near a National Security patrol in the vicinity of An Nuwei'ma in Jericho city; near two Police stations and Palestinian District Coordination Office (DCO) in Bethlehem; near a Police station in Tuqu' in Bethlehem District; and near security offices in Bethlehem and Beit Sahur. In addition to taking photographs of guards, the Israeli military took up position near <i>Al Muqata'a</i> (the complex of Palestinian security forces) and in front of the Palestinian National Security headquarters on several occasions in Hebron. Also in the Hebron District, the Israeli military took up position near the Police headquarters in Hebron; near a Police station in Halhul; near a National Security patrol in Hebron; in front of two National Security offices, Preventive Security offices, and Customs Police offices in Dura; and near a Police station in Kurza.

¹ This table does not cover Israeli violations in the H2 area of the old city of Hebron, which is under full Israeli security control.

² A total of 11 incidents of provocation of Palestinian security forces were reported to have taken place in the Hebron district, including six in Hebron city. In the majority of these incidents, the Israeli army set up flying checkpoints near Palestinian security posts and offices.

³ These statistics do not include the arrest of 10 Palestinian security officers.

Detaining and searching Palestinian security officers and patrols	8	Israeli troops positioned at checkpoints set up in Ramallah District detained three Palestinian Police vehicles as well as a National Security vehicle and confiscated a wireless telecommunications device. Despite prior coordination with the Israeli authorities (through the DCO), Israeli troops positioned at a Wall gate leading to farmland in ‘Akkaba in Qalqiliya District denied access to two Palestinian Civil Defence fire trucks to extinguish fire, causing damage to hundreds of olive trees cultivated on approximately 1,500 <i>dunums</i> (371 acres) of land. Israeli troops positioned at a checkpoint in Qalqiliya district also detained a Civil Defence vehicle. The Israeli military also detained two National Security vehicles at a checkpoint in Jericho District.
--	----------	---

8. Attacks on Public and Private Property

A total of **77 incidents of destruction and confiscation** of Palestinian public and private property were reported in June, including **66** in the West Bank and **11** in the Gaza Strip.

In **Jerusalem** District, the Israeli military demolished an agricultural holding, barracks, and a horse barn in Al ‘Isawiya; a garage annexed to a civilian house in Ath Thuri neighbourhood; and three sheep pens and poultry farms in Silwan neighbourhood in Jerusalem. In **Ramallah**, Israeli troops and settlers damaged a camera belonging to a press photographer and set fire to olive groves in Ni’lin and Al Mazra’a ash Sharqiya. In **Jenin**, Israeli settlers threw stones at civilian vehicles travelling near Halamish, breaking a vehicle’s windshield. The Israeli army also closed the entrance to a sanitary landfill in Barta’a village. In **Qalqiliya**, the Israeli army prevented civilian residents of Kafr Qaddum from constructing a rural road. In addition to setting fire to a civilian vehicle in Immatin, Israeli settlers stoned civilian vehicles near Kedumim settlement and along the Qalqiliya-Nablus main road, breaking windshields of two vehicles. The Israeli military also prevented civilians from reclaiming land in the Wadi Qana area. In **Nablus**, the Israeli military removed advertisement banners near Sinjil and As Sawiya towns along the Ramallah-Nablus main road. Israeli settlers set fire to wheat crops as well as to approximately 100 olive trees and 50 almond trees in Huwwara, ‘Asira al Qibliya and ‘Einabus. In addition to damaging furniture of three houses in ‘Asira al Qibliya and ‘Einabus, Israeli settlers set fire to olive and almond trees in Kafr Qalil, wheat crops in ‘Iraq Burin, olive trees in Qaryut, and crops in Immatin. In **Jericho**, an Israeli settler opened fire on a herd of cattle near Fasayil, killing a cow. The Israeli military also dismantled five vendor stalls along Road # 90 and used explosives to destroy a car spare wheel at Al Hamra checkpoint. In **Bethlehem**, Israeli troops and settlers damaged and burned olive trees in the Cremisan area North of Beit Jala as well as uprooted approximately 80 olive and forest trees in Al Walaja. In **Hebron**, Israeli settlers cut down a centuries-old olive tree and damaged crops and an irrigation network in the Hebron’s Old City. Israeli troops positioned on a military watchtower on Al Fawwar junction threw stones, damaging a civilian vehicle’s windshield. An Israeli military jeep ran into and damaged a civilian vehicle in Kharsa village.

In **Northern Gaza**, the Israeli military damaged farmland North of Beit Hanun. In **Gaza**, the Israeli army destroyed crops east of Az Zaytun neighbourhood East of Gaza City and damaged farmland East of the Juhor ad Dik area. In **Central Gaza**, the Israeli military caused damage to crops East of Al Maghazi refugee camp and the Israeli military destroyed a fishing boat close to shore. In **Khan Yunis**, the Israeli military levelled land and destroyed crops east of the Al Farahin area, East of ‘Abasan al Kabira, and East of Al Qarara. In **Rafah**, the Israeli military destroyed crops East of the An Nahda neighbourhood East of Rafah.

The Israeli military distributed notices for the suspension of building a civilian house in Al Jalazun refugee camp in Ramallah District; several houses near Jericho; and a rural road in the Abu Zeid Mountain area in Artas in Bethlehem District. The Israeli military distributed notices for the evacuation of eight Palestinian sheep tenders from the ‘Atuf village plain, nine civilian houses in the Al Farisiya area, and a house in the Wadi al Malih area in the Northern Jordan Valley in Tubas District. The Israeli military delivered notices for the demolition of barracks and a factory in Jinsafut in Qalqiliya District and six barracks in Az Zubeidat in Jericho District.

The Israeli military confiscated a computer from Al Quds University in Abu Dis a container in Silwan neighbourhood in Jerusalem District. In Ramallah, Israeli troops confiscated a wireless telecommunications devices from a Palestinian Civil Defence vehicle. In addition to seizing a septic truck in Jenin District, the Israeli military confiscated ID cards belonging to a civilian and four brothers during a raid into Jenin refugee camp. In Tulkarem, the Israeli military confiscated car spare parts from a mechanic's workshop in Nur Shams refugee camp; two personal computers from Tulkarem; and a computer from Bizzariya. The Israeli military seized an M16 rifle and ammunition in Nablus District as well as car wash equipment in Salfit District. Israeli troops positioned at Al Hamra checkpoint in Jericho District and confiscated fireworks from a civilian vehicle. The Israeli military arrested a civilian and confiscated his vehicle in Dura in Hebron District.

9. Settlement Activity

Seven incidents of settlement activity were reported to have taken place in the West Bank during the month of June. In Jerusalem District, the Israeli military levelled land in an area between Neve Ya'akov and Pisgat Ze'ev settlements East of Jerusalem city for the construction of 600 new settlement housing units. In addition, the Israeli military levelled land in Al 'Isawiya village. The Israeli military also levelled farmland in Al Walaja in Bethlehem District. In Qalqiliya, the Israeli military installed a wire fence around Kedumim settlement and excavated land for installation of electricity posts near Jit village.

10. Settler Violence

Israeli settlers carried out **52 acts of violence** in West Bank Districts during June.

Jerusalem: Israeli settlers assaulted civilians in Silwan neighbourhood; opened fire and injured a civilian near Al 'Eizariya; attempted to construct a road for installation of caravans in Beit Safafa; and raided the grounds of the Al Aqsa Mosque compound.

Ramallah: Israeli settlers set fire to olive groves in Al Mazra'a ash Sharqiya; provoked civilians along Al Mu'arrajat Road East of At Tayba; threw stones at civilian vehicles near Beit Il settlement; and caused damage to a vehicle.

Jenin: Israeli settlers threw stones at vehicles travelling near Halamish settlement, damaging the windshields of two vehicles.

Qalqiliya: On several occasions, Israeli settlers threw stones at civilian vehicles travelling along the Qalqiliya-Nablus main road near Immatin village and Kedumim settlement; set fire to farmland and a civilian vehicle in Immatin; and denied access to civilians and Palestinian Civil Defence fire trucks to attempting to extinguish fires set to farmland in the area between Immatin and Far'ata.

Nablus: On several occasions, Israeli settlers gained access to the archaeological site in Sabastiya; areas between Burqa and Sabastiya villages and between 'Aqraba and Beita towns; and to 'Aqraba town, where they also beat a civilian. Israeli settlers set fire to approximately five *dunums* (1.2 acres) of farmland in the area between Burin and 'Iraq Burin villages as well as to 12 *dunums* (3 acres) of land cultivated with wheat crops, 100 olive trees, and 50 almond trees in Huwwara town and 'Asira al Qibliya and 'Einabus villages. In addition to damaging civilian land in Qaryut and Kafr Qalil villages, Israeli settlers stoned civilian vehicles travelling near the junction to Yitzhar settlement, breaking a vehicle's windshield. Israeli settlers also threw stones at civilians near Bracha settlement, leaving a child with bone fractures in the arm and leg.

Salfit: Israeli settlers threw stones at civilian vehicles travelling near the junction to Kifl Haris town and gained access to an area north of Farkha village.

Jericho: An Israeli settler vehicle ran over a civilian along Road # 90 near Marj al Ghazal village. Israeli settlers opened fire on a cattle herd near Fasayil village, killing a cow and injuring another.

Hebron: Israeli settlers opened fire on civilians near Al ‘Arrub refugee camp, injuring 2 children. Of these, one was in a critical condition. Israeli settlers severely beat a child with a rifle butt, wounding him in the head. Near At Tuwani village, Israeli settlers severely beat three civilians, including two women. Israeli settlers raided Khirbet Safa village and attacked civilian houses; took position at the entrance to As Samoa’ town; and gained access to an area east of Yatta town, Wadi ar Rushrash area between Halhul and Nuba towns, and the evacuated military post of Al Majnuna near the At Turrama village.

In the **H2 area of Hebron**, which is under full Israeli security control, an Israeli settler vehicle ran over and critically wounded a 10-year-old child near Kiryat Arba’ settlement. Israeli settlers threw stones and garbage at participants in a mass demonstration, including international peace activists, who were protesting against Israeli settlement activity and demanding that the Ash Shuhada’ Street be reopened and freedom of movement allowed. Israeli settlers also threw stones at civilian vehicles; cut down a long-lived olive tree in Tall Rumeida neighbourhood; and damaged crops and an irrigation network on civilian land near Kiryat Arba’ settlement.

11. School Disruption

Over the month of June, **four incidents of school disruption** took place in the West Bank districts. The Israeli army raided Al Quds University and searched laboratories in the Jerusalem District. While students were sitting for high school examinations, Israeli troops raided two schools in Nahhalin in Bethlehem District. In Hebron District, Israeli troops took position near a school in Kharsa and impeded access to students writing a high school examination. The Israeli army also delivered a notice for the demolition of a mobile school in An Nuwei’ma in Jericho District.

12. Attack on Religious Sites

In June, **two attacks on religious sites** were reported to have taken place in the West Bank. The Israeli military raided and took photographs of a mosque in the Old City of Hebron and surrounded another mosque in Hebron.

13. Medical Obstruction

During the month of June, Israeli troops severely beat five medics in Ni’lin in the Ramallah District.

14. Closure of Crossing Points

The Israeli military completely closed crossing points into the Gaza Strip, including access points within the Green Line, on **124** occasions during June. The Israeli military closed crossing points within the Green Line on **94** occasions. It opened ***Beit Hanun (Erez) Crossing*** for 26 days for previously-coordinated humanitarian cases and foreign nationals; ***Al Muntar (Karni) Commercial Crossing*** for 8 days for transportation of wheat, animal feed, and construction cargo designated for projects sponsored by the United Nations Relief and Works Agency (UNRWA); and ***Karm Abu Salem (Karem Shalom) Crossing*** for 22 days for transportation of food supplies, humanitarian aid, cooking gas, and diesel allocated for the Gaza Electricity Generation Plant. The Israeli authorities also unilaterally decided to completely close ***Ash Shuja’iya (Nahal ‘Oz) Crossing*** and ***Sufa Crossing***.

The Israeli military closed international crossing points on **30** occasions. ***Rafah Crossing*** was open throughout the month to allow access to tens of thousands of civilians, persons holding visas and residence permits abroad, and patients who had received medical attention at Egyptian hospitals. Additionally, several tonnes of medical supplies and medicine were transported to the Gaza Strip through the Crossing. ***Yasser Arafat International Airport*** has remained closed since the outbreak of the second *Intifada*.